



JANUARY 2024 NEWSLETTER

WHO WANTS TO GO TO THE COUNTRY MUSIC HALL OF FAME!

The Country Music Hall of Fame and Museum, located in downtown Nashville, has been called the “Smithsonian of Country Music,” celebrated for its broad cultural impact, educational mission, and unrivaled collection of historically important artifacts related to country music.

Find the hidden brain teaser in this issue and submit your answer by **Tuesday, January 30th at noon!** All participants with the correct answer will be entered into a drawing. Beech will be giving away four tickets, two tickets for each winner!



Employees who win must wait three months before winning another Newsletter Challenge contest, however, it also depends on entries received, so – always submit your answer. If you cannot, or do not wish to attend the event, turn these back into the office, so we can reward another Beech employee.



Congratulations to Billy Gattis and Jason Tomlinson, they were last month’s winners of the Newsletter Challenge, and they each won two tickets to the Murder Mystery Dinner.

Employee Appreciation – employees that have been with Beech over a year, qualify for a monthly drawing. **Michael Sims** and **Ricky Gentry** are the two lucky employees who received a gift basket from Harry & David. Thank you for being a big part of what we do!



Hello January! New Month, New Year, New Chapter, New Beginning, New Focus, New Opportunity, New Results

Check Us Out <https://www.beech-construction.com/newsletters>

<https://www.instagram.com/beechconstruction1/>



JANUARY 2024 NEWSLETTER

BEECH INSIDER NEWS – PERFECT ATTENDANCE BONUS



Monthly Perfect Attendance – If you work 8 hours a day, 40 hours a week, you will receive an extra \$50. After twelve months of perfect attendance, you will receive \$1,000. Congratulations to the following for perfect attendance in December, all will receive \$50.

- Doug Gibson & Suan Slayton have 11 consecutive months of perfect attendance.
- Valentin Esquibel is at 9 months.
- Jose Hernandez Vazquez & Joseph Vasquez have 8 months.
- Dan Krawczyk & David Gasnik both have 7 months.
- Richard Abad is at 6 months.
- Joe Martin Ruiz, Angelo Echevarria and Fidel Gonzalez have 5 months.
- Allan Guardado and Miles Catropa is at 2 months.
- Daniel Jackson and Mike Sims have 1 month.



BIRTHDAYS

ANNIVERSARIES



- Doug Gibson – 1st
- Ashlyn Sexton – 6th
- Chris Rankhorn – 6th
- Charles Mathis – 8th
- Fidel Gonzalez – 10th
- Ernesto Gutierrez – 16th



- Ricky Gentry – 28 years
- Michael Sims – 7 years
- Doug Gibson – 1 year

Hello January! New Month, New Year, New Chapter, New Beginning, New Focus, New Opportunity, New Results

Check Us Out <https://www.beech-construction.com/newsletters>

<https://www.instagram.com/beechconstruction1/>



SAFETY TIPS FOR WINTER DRIVING



Driving requires all the care and caution possible any time of year. But winter driving has even greater challenges because of wet and icy road surfaces, longer hours of darkness and poor visibility because of snow, rain and fog.

- 1. Allow enough time to get to your destination.** Rushing in difficult driving conditions can lead to an accident. Turn your radio on to listen to the road report and weather forecast. Leave a few minutes earlier in the morning and allow plenty of time to get to work. Buckle your seat belt or safety restraint before you start driving.
- 2. Stay alert.** Don't drive when you are under the influence of alcohol, drugs or certain medications. Read the labels of prescription drugs and over-the-counter medicines to determine if they can cause drowsiness. Driving demands your full attention.
- 3. Stay calm.** Sometimes other drivers will become frustrated with slow-moving traffic. Keep your temper and don't let other drivers aggravate you. Maintain a safe speed and drive defensively.
- 4. Keep a safe distance between you and other vehicles.** The "two second rule" works well on dry roads and in ideal conditions, but in winter you should extend it to four seconds. Watch the vehicle directly ahead of you. As it passes a stationary object start counting - "one thousand and one", "one thousand and two", and so on. Your vehicle should not pass the same object until you say the word "four."
- 5. Keep your car well-maintained and in good working order.** This includes having good tread on your tires, the engine tuned-up for winter, and all lights functioning properly. In colder climates, you may need to add anti-freeze to the radiator. In some areas, gasoline antifreeze may be required.
- 6. Clean your windows and headlights frequently.** Keep your windshield washer fluid topped up. Good visibility is essential to safe driving. Clean your windows and headlights of ice or snow before starting out, and repeat frequently throughout your trip.

**I have a straight
back and sharp
teeth that bite.**

What am I?

Hello January! New Month, New Year, New Chapter, New Beginning, New Focus, New Opportunity, New Results

Check Us Out <https://www.beech-construction.com/newsletters>

<https://www.instagram.com/beechconstruction1/>



7. Drive appropriately for the road conditions. The posted speed limit may be too fast under winter conditions. Driving on a wet road can cause hydroplaning as a thin barrier of water builds up between your tires and the road surface, causing your vehicle to slip. If you begin to lose control of your steering, take your foot off the gas.

8. Stay with your vehicle if it breaks down. Put on your emergency flashers and wait for assistance. Carry a sign for your window, asking other motorists to tell the police you need help.

9. Wait out bad weather. Strong icy winds in combination with snow or dust can make it impossible to see where you are driving - or walking. Under these conditions it is usually safest to stay with your vehicle and wait out the storm.

10. Plan your moves carefully. In slippery conditions, never jam on your brakes in a panic stop, you will most likely skid and lose control of the vehicle. Instead, pump your brakes gently a few times.

11. Avoid driving through deep puddles, especially at high speeds. The water can make your brakes less effective and, if deep enough, can cause serious engine damage. If you must drive through water and you are not sure about the depth, slow right down and cautiously inch forward until you are certain it is safe.

12. Quit driving when you begin to feel sleepy. If you have a long distance to drive, take frequent short breaks for fresh air and a walk around the vehicle.

WINTER DRIVING TIPS

 <p>DRIVE SLOWLY WITH CRUISE CONTROL TURNED OFF.</p>	 <p>INCREASE YOUR FOLLOWING DISTANCE TO ALLOW PLENTY OF TIME TO STOP FOR THE VEHICLE AHEAD.</p>
 <p>ACCELERATE AND BRAKE GENTLY. APPROACH TURNS SLOWLY.</p>	 <p>USE EXTRA CAUTION ON BRIDGES, RAMP AND OVERPASSES.</p>
 <p>BUCKLE UP. EVERY RIDER. EVERY SINGLE TIME.</p>	 <p>MAKE SURE HEADLIGHTS ARE ON SO YOU ARE VISIBLE TO OTHER DRIVERS.</p>

Hello January! New Month, New Year, New Chapter, New Beginning, New Focus, New Opportunity, New Results

Check Us Out <https://www.beech-construction.com/newsletters>

<https://www.instagram.com/beechconstruction1/>

PROGRESS PICTURES

Hello 2024! It looks like another busy year, as of January, we have over 50 active jobs and 132 jobs out to bid. Thank you to all the Project Managers and Assistant Project Managers for all their hard work, and to all the Superintendents for the countless hours to keep projects on schedule, and a big shout out to all the laborers, for getting up early or staying late. It takes each and everyone to make Beech successful. Thank you for being a part of this wonderful Team.

Atrium Glass and Reglazing



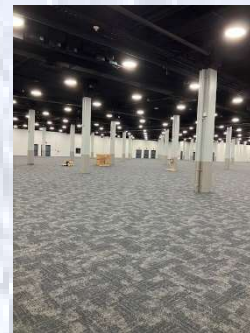
Vandy Commons



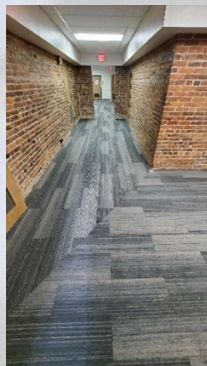
Atrium Glass and Reglazing



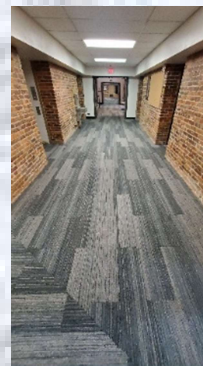
Opryland Exhibit Hall



Furman Hall



Furman Hall



Hello January! New Month, New Year, New Chapter, New Beginning, New Focus, New Opportunity, New Results

Check Us Out <https://www.beech-construction.com/newsletters>

<https://www.instagram.com/beechconstruction1/>