



BEECH INSIDER NEWS

APRIL NEWSLETTER CHALLENGE – Who loves Cars? The Goodguys Car Show will be at the Nashville Superspeedway in Lebanon. Find the hidden brain teaser, send in your answer by Friday, April 26th at noon, and you can win two tickets for May 18th. Good Luck!



MARCH PERFECT ATTENDANCE BONUS – **Billy Gattis** and **Jose Hernandez Vazquez** have 11 months of perfect attendance. One more month of perfect attendance, and they both will receive \$1,000.

The following also had perfect attendance for March and will receive \$50. Dan Krawczyk, David Gibson & David Gasnik have 10 months; Fidel Gonzalez has 8 months; Miles Catropa is at 5 months; Mike Sims has 4 months; Doug Gibson, Suan Slayton and Joseph Vasquez have 2 months. Allan Guardado, Juan Sanchez Patlan and Jose Sanchez Patlan have 1 month of perfect attendance. Thank you all for all your hard work and dedication.



CONGRATULATION to **Ashlyn Sexton** and **Doug Gibson** for winning the **March** Newsletter Challenge. They both will receive a gift card to **Top Golf**. Have Fun!

EMPLOYEE APPRECIATION – Employees that have been with Beech Construction for over a year qualify for a monthly drawing. **Suan Slayton**, **Jose Hernandez Vasquez** and **Micki Cooper** are the latest recipients – thank you for being a part of the Beech Team.

NEW TO THE TEAM! Let's welcome **Lee Holland**, **Project Manager**, **Nicole Paschal**, **HR/Safety Manager** and **Egan Ashenfelter** to the Beech Team!



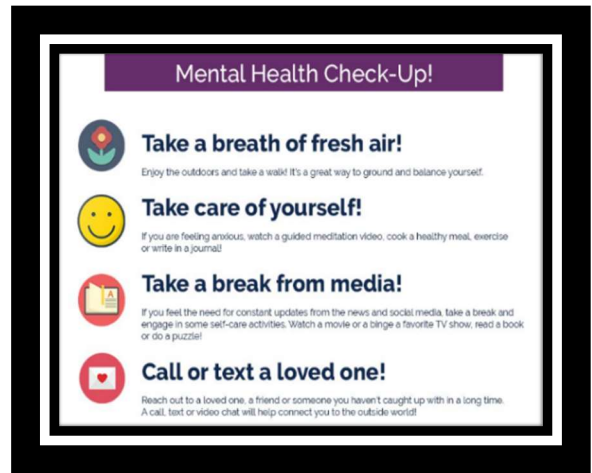
"Your Positive Action Combined with Positive Thinking Results in Success."

Employees who have won a newsletter challenge, must wait three months before eligible to win again.



HEALTH CHECK BECAUSE WE CARE!

Mental health includes our emotional, psychological, and social well-being. It affects how we think, feel, and act. It also helps determine how we manage stress, relate to others, and make healthy choices. Mental health is important at every stage of life, from childhood and adolescence through adulthood. Getting outside and into the fresh air for a nice walk can have a profound effect on your mental health. It begins with the simple act of feeling better about yourself. While walking the brain releases endorphins that can reduce anxiety, improve mood, and generate a sense of well-being.



APRIL BIRTHDAYS

- John Rutherford – 7th
- Garrett Montano – 26th
- Joe Ruiz – 28th
- Austin Holloway – 30th

APRIL ANNIVERSARIES

- Jeff Atkins – 4 years
- Kelly Ferrell – 2 years
- Joesph Vasquez – 1 year
- David Gasnik – 1 Year



"Your Positive Action Combined with Positive Thinking Results in Success."

Employees who have won a newsletter challenge, must wait three months before eligible to win again.



BEECH CONSTRUCTION POLICY DISTRACTED DRIVING



Of increasing concern to Beech Construction is the growing use of mobile electronics. Numerous studies have demonstrated how the use of cell phones and other wireless devices while driving pose a significant safety risk to motorists, their passengers and others on the road. In fact, scientific studies have shown that **cell phone use while driving increases the risk of being in a crash 4 to 5 times**, and **texting while driving increases the risk of an accident by 23 times**.

Studies have compared the risk of slower reaction times caused by cell phone use to those of driving with a blood alcohol concentration of .08, which would constitute a drunk driving violation in all fifty states. Therefore: When driving Beech Construction owned vehicle, employees may not use cell phones without a hands-free device or any other mobile electronic devices while operating a motor vehicle. This includes, but is not limited to, answering or making phone calls without a hands-free device, reading or responding to e-mails and text messages, adjusting a Global Positioning System (GPS), and accessing the internet.

THE THREE TYPES OF DISTRACTED DRIVING AND HOW TO AVOID THEM

		
VISUAL	MANUAL	COGNITIVE
		
<p>Keep your eyes on the road.</p> <p>Pull over to read directions.</p> <p>Put your phone in "Do Not Disturb" mode.</p>	<p>Keep your phone out of reach.</p> <p>Make all adjustments before driving.</p> <p>Don't reach for items while driving.</p>	<p>Avoid phone calls, even hands-free.</p> <p>Stay focused on the road.</p> <p>Keep your emotions in check.</p>

These restrictions do not apply to calls made to report an emergency. In all such cases, all cautionary measures should be practiced.

"Your Positive Action Combined with Positive Thinking Results in Success."

Employees who have won a newsletter challenge, must wait three months before eligible to win again.



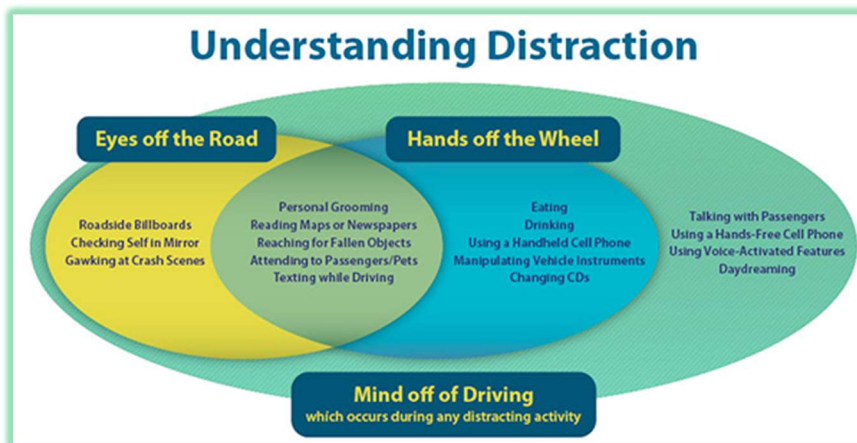
BEECH CONSTRUCTION POLICY DISTRACTED DRIVING

Beech employees are required to:

- Consider turning off, putting on silent or vibrate wireless phones or other devices before starting the car.
- Pull over to a safe place and put the vehicle in the "Park" if a call must be made or received while on the road unless operating with a hand free device.
- Consider modifying your voice mail greeting to indicate that you are unavailable to answer calls or return messages while driving.
- Inform clients, associates, and business partners of this policy as an explanation of why calls may not be returned immediately.
- Pull over to a safe place and put the vehicle in "Park" to adjust a Global Positioning System (GPS) or other navigation devices.

**I can fly but
I have no wings
I can cry but
I have no eyes
What am I?**

In conclusion: Beech Construction is concerned about the safety and well-being of its employees. This is so important that violations of this policy will be considered serious and may result in the imposition of discipline up to and including termination. Furthermore, Beech Construction will not be held liable for



those employees who violate this policy and cause property damage or personal injury. The employee will be held solely responsible for all punitive and civil damages that result from an accident in which this policy is proven to be violated.

"Your Positive Action Combined with Positive Thinking Results in Success."

Employees who have won a newsletter challenge, must wait three months before eligible to win again.



PROJECT PICTURES

ATRIUM GLASS PROJECT



ATRIUM GLASS PROJECT



ATRIUM GLASS PROJECT



**CHANCELLORS RESIDENCE,
DEMO PHASE**

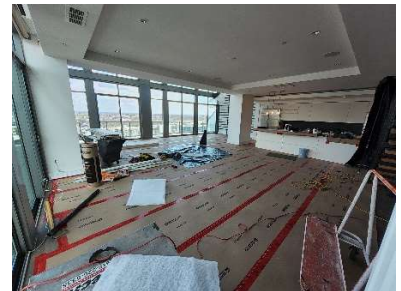


TEAM:

(noun)

An amazing group of talented people who work together to attain incredibly awesome results

**CHANCELLORS RESIDENCE,
DEMO PHASE**



MANHEIM



MANHEIM



MANHEIM



"Your Positive Action Combined with Positive Thinking Results in Success."

Employees who have won a newsletter challenge, must wait three months before eligible to win again.