



SEPTEMBER 2023 NEWSLETTER

INSIDER NEWS

September Employee Recognition goes Chris Vanatta. Employees that have been with Beech Construction for over a year are entered into a monthly drawing. *Thank you for all your hard work – we appreciate you!*



Chris Rankhorn and **Billy Gattis** won the August Newsletter Challenge and received two tickets each to see Thomas Rhett in concert.

YOU could win tickets to see the **Nashville Predators vs San Jose Sharks**, Saturday, October 21st at 7PM, at the Bridgestone Arena. Find the hidden question and send in your answer by **Monday, September 25th at noon**. It's that easy. Winners will be announced on Monday, October 2nd. Good Luck!



Steve Mason, Dan Krawczyk, Mike Sims, Valentin Esquibel, Jose Vazquez, Joe Ruiz, Doug Gibson, David Gibson, Suan Slayton, Joseph Vasquez, Angelo Echevarria, Richard Abad, Billy Gattis, Fidel Gonzalez, Henry Duessen, and David Gasnik all had **perfect attendance for August!**

“
Success is best when it's
shared.”

Congratulations to **Billy Gattis** on his promotion to Foreman.

“I didn't get there by wishing for it or hoping for it, but by working for it.” — Estée Lauder

SAFETY TIPS - USE YOUR HEAD WEAR YOUR HARD HAT

Your head is the most important part of your body. You think, feel, talk, smell, and hear with your head. Therefore, it makes sense that you should protect your head from any injury.

1. **Importance of Hard Hats** - Wearing a hard hat is the first line of defense against head injuries on the job. A hard hat can protect your head against the hazard of falling material and guard against accidental bumping. The hard hat softens any blow to the head. It resists and deflects the blow and distributes the impact over a large area. The hat's suspension acts as a shock absorber. Even if the hat dents or shatters, it still takes some of the force out of the blow and off your head. It can also shield your scalp, face, neck, and shoulders against spills or splashes.



2. **Choosing the Right Hard Hat** - Choose the hard hat most suitable for the work being performed and only wear approved hard hats manufactured to meet required standards. These are made to give your head maximum protection. Make sure your hat fits correctly. Hats that fit right provide you with the most comfort and protection.
3. **Proper Care** - The ability of a hard hat to protect a worker depends on the shock absorbing space between the shell and head by the suspension provided. Therefore, it is important that sweat bands and suspension straps be properly adjusted to obtain the maximum protection. Sunlight and heat can rot the sweatband and straps, so don't leave your hard hat on the window ledge of your car. Take good care of your hard hat. Don't drop it, throw it or drill holes in it. Inspect your hard hat every day for cracks, gouges, and frays or breaks in the straps.

4. **Identifies a Safe Worker** - Colors can be used to identify different crafts and supervisory personnel and should be encouraged and given consideration when purchasing such equipment. All levels of supervision should set the example by wearing hard hats. Observe and comply with "Hard Hat Area" sites. Remember! A hard hat is a status symbol; it identifies a safe worker, one who believes in and practices safety.





INSIDER NEWS

**“Tough times don’t last.
Tough teams do.”**

Today was the absolute worst day ever
And don’t try to convince me that
There’s something good in every day
Because, when you take a closer look,
This world is a pretty evil place.

Even if

Some goodness does shine through once in a while
Satisfaction and happiness don’t last.

And it’s not true that

It’s all in the mind and heart

Because

True happiness can be attained

Only if one’s surroundings are good

It’s not true that good exists

I’m sure you can agree that

The reality

Creates

My attitude

It’s all beyond my control

And you’ll never in a million years hear me say that

Today was a very good day

Now read this again from bottom to top. Once complete,
send me an email with something good that has
happened to you this week!

**OCTOBER
BIRTHDAYS**

David McGaw – 5th

Micki Cooper – 6th

Kelly Ferrell – 24th

David Gibson – 29th

Allan Guardado - 31st

Jason Tomlinson – 31st

**OCTOBER
ANNIVERSARIES**

Jose Hernandez Vazquez – 1 year

Chad Combs – 1 year

David McGaw – 1 year

Lori Stevens – 2 years

SAFETY TIPS 811 "CALL BEFORE YOU DIG"

Knowing where underground lines are buried before each digging project helps protect you from injury and penalties.

- What is 811? - –The new National FCC-designated number to mark utility lines –811 eliminates confusion of multiple “call before you dig” numbers –One call to 811 gets all underground utility lines marked for FREE –When you call 811 from anywhere in the U.S.A. your call will be automatically routed to your local “One Call Center”.
- Why Call 811? - –Digging without calling can lead to serious injury and penalties –The depth of utility lines varies and there may be multiple lines –Damage to utility lines can disrupt service to entire neighborhoods –Contact with an underground utility can cause serious injury or death to all involved –It is the SAFEST way to protect you from making contact with any underground utility –There are nearly 700,000 unintentional underground utility damages per year.
- When To Call 811? - –ALWAYS call before any digging takes place –Call 811 before each job – or visit <http://www.call811.com> for more information.



5 STEPS FOR SAFE DIGGING

Working on an outdoor project? Always call 8-1-1 first, because you never know what's below.
Here are five easy steps for safe digging:

Source: call811.com

1. NOTIFY

Call 8-1-1 or make a request online two to three days before you start.



2. WAIT

Wait two to three days for a response to your request. Affected utilities will send a locator to mark any underground utility lines.



3. CONFIRM

Confirm that all affected utilities have responded by comparing the markers to the list of utilities the 8-1-1 call center notified.



4. RESPECT

Respect the markers provided by the affected utilities. They are your guide for the duration of your project.



5. DIG CAREFULLY

If you can't avoid digging near the markers (within 18-24 inches on all sides, depending on state laws), consider moving your project.



PROGRESS PICTURES

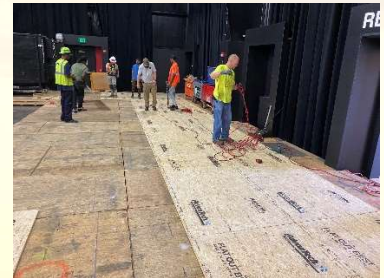
Ryman, Trenches



Lionel



ICE



Ryman, Trenches



Lionel



ICE



WHY BEECH CONSTRUCTION IS A GREAT PLACE TO WORK!

What do you like about Beech Construction Services?

I really like all the different jobs we get to do because I get to learn something new every day. I also like the people I work with. I have a great boss and a great crew to be a part of. Working for a smaller company makes me feel like I'm not just another employee but like I'm valued as an individual. - *David Gibson*

The atmosphere and culture. The small company vibes. The benefits that the Griffins provide for their employees. - *David Gasnik*



"I didn't get there by wishing for it or hoping for it, but by working for it." — Estée Lauder